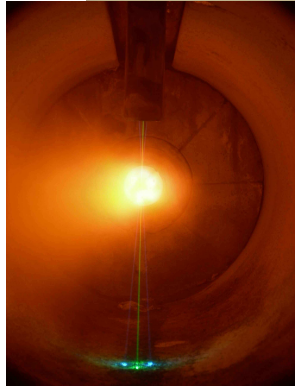


"In-Flame" Metrology

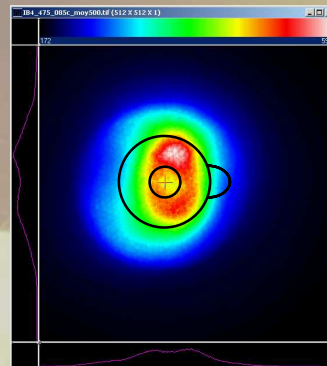
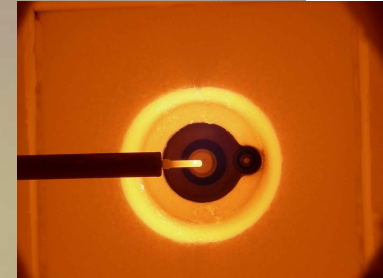


Velocity :

Laser Doppler Anemometry

Mean species components :

Suction pyrometer
Sonic Nozzle Probe



Flame Imaging
Intensified CCD camera



Flame emission spectrum :

Fourier Transform (FT)
spectrometer (1 – 6 μm)

Flame temperature :

Fine Wire Thermocouple (\nearrow 2000°C)
Suction pyrometer

